

Biogas Burner



<http://www.bke.co.th>
contact@bke.co.th

BKE Biogas Burners are designed to fit our clients' applications where the following key parameters are taken into consideration:

- H₂S content
- Moisture content
- Methane content
- Flame speed
- Flame shape (long or flat)
- Direct or indirect firing
- Chamber temperature
- Chamber pressure
- Biogas pressure
- Possible corrosion within the flue gas train
- High efficiency
- Less pollution
- Alternative fuels for co-firing or dual firing
- High safety standards

Note: Biogas burners have many parameters as noted above; therefore specific designs are needed in order to achieve optimum performance reliability.



| Model | Biogas Consumption (Nm ³ /hr) | Max Capacity* (kw) | Working Pressure (mb) |
|--------|--|--------------------|-----------------------|
| BB250 | 250 | 1,389 | 50-200 |
| BB500 | 500 | 2,778 | 50-200 |
| BB750 | 750 | 4,167 | 50-200 |
| BB1000 | 1,000 | 5,556 | 50-200 |
| BB1250 | 1,250 | 6,947 | 50-200 |
| BB1500 | 1,500 | 8,333 | 50-200 |
| BB2000 | 2,000 | 11,111 | 50-200 |

**Subject to change based upon client's specific application.*



Patents:

World Intellectual Property Organization publication number: WO 00/59087

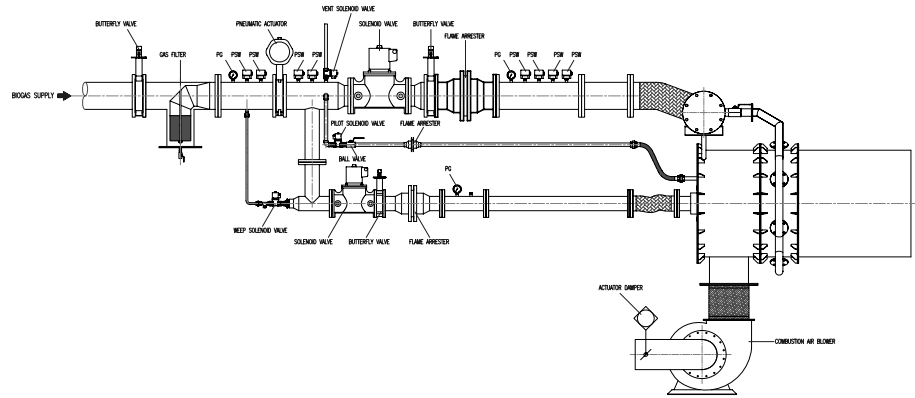
Department Of Intellectual Property of Thailand publication number: 18984

Biogas Burner



<http://www.bke.co.th>
contact@bke.co.th

Biogas Burner Diagram:



Technical Specifications

| | |
|-------------------------|--|
| Type: | Automatic forced draught burner |
| Fuel: | Biogas (Minimum 55% Methane) |
| Co-Fuel: | Oil or gaseous fuel (Option) |
| Burner Control: | European standard EN 298 - Purge time = 60 sec - Safety time = 5 sec max |
| Flame Arrester: | End-of-line stainless steel flame arrestor before biogas nozzle(s) European Standard Design & Test (EN 12874) |
| Flame Detector: | UV sensor flame detector |
| Ignition System: | 14,000 Volt European standard ignition transformer w/optional LPG igniter |
| Gas Train: | Stainless steel gas train with automatic valve proving system (VPS) |
| Safety Shut-off Device: | Solenoid valves or pneumatic/electric automatic valves |
| Biogas Supply Pressure: | 50-200 mbar (adaptable to available pressure) |
| Temp Level: | 2 stages: 1st for low flame and 2nd for high flame |
| Air Damper: | Pneumatic air damper |
| Turn-Down Ratio: | 1/5 as standard, option can be 1/20 |



32 Phakam Rd, Tambon Huawieng, Amphur Muang
Lampang 52000 THAILAND
Tel: (66) 54 228680-1 Fax: (66) 54 227802
website: <http://www.bke.co.th> email: contact@bke.co.th